



SOUND ANCHORS
STUDIO PRO MONITOR STANDS
Fully Adjustable Stands for Large Studio Monitors
Assembly Instruction



Sound Anchors
2835 Kirby Cir NE Unit 110
Palm Bay, FL 32905
321-724-1237
Office@Soundanchors.com
www.soundanchors.com

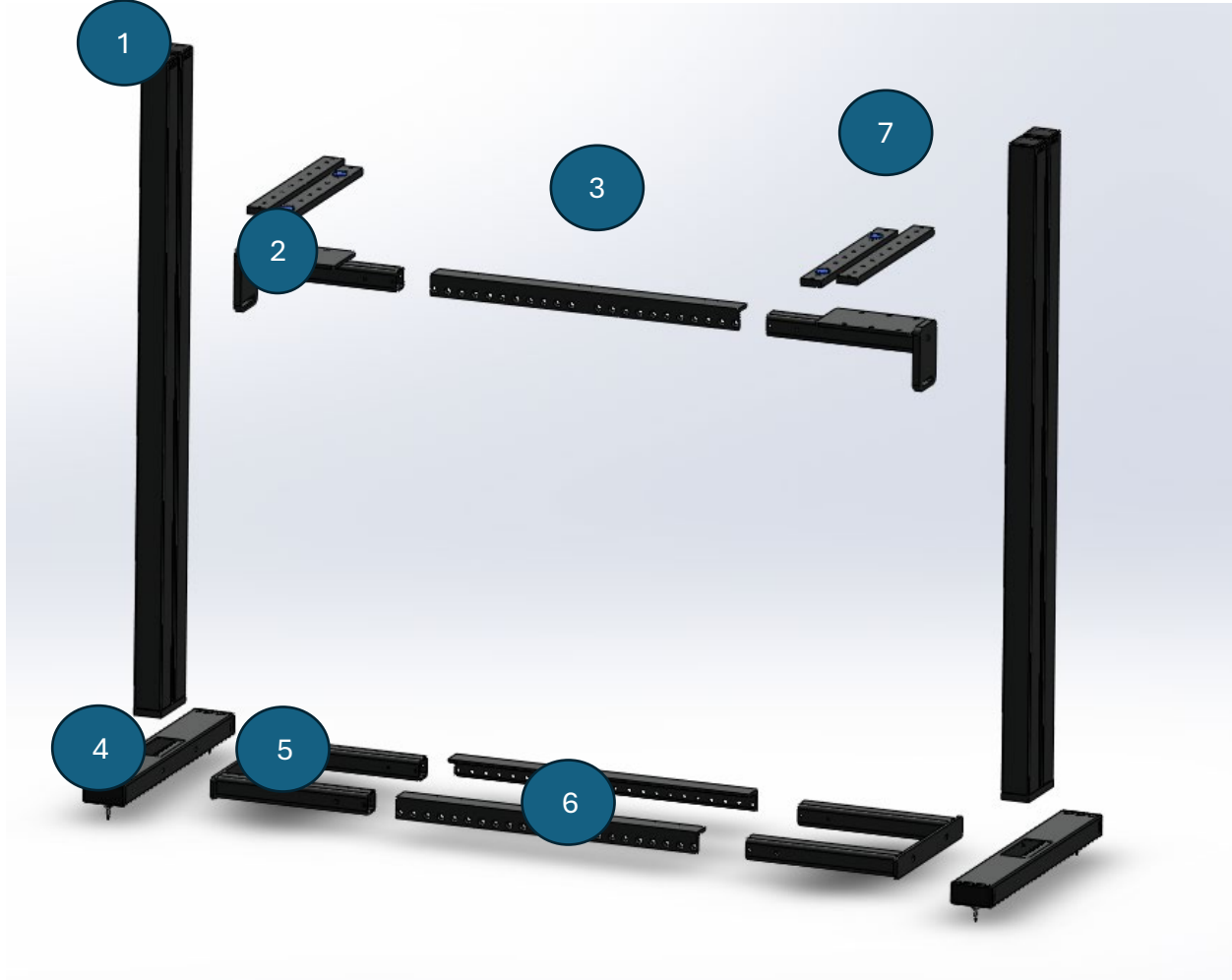
Studio Pro Monitor Stand Hardware kit



Hardware List for 1 stand:

1. 1/4-20 x 5/8 flathead cap screws (12 ea) (used in upper and lower assemblies)
2. 3/8 SAE flat washer (4 ea)
3. 3/8-16 spikes (4 ea)
4. 3/8-16 jam nut (4 ea)
5. 7/16-14 x 3/4 hex head cap screw (4ea) (gold)
6. 7/16 flat washer (4ea)
7. 3/8-16 x 3/4 low head socket head cap screw (4ea)
8. 5/16-18 x 3/4 socket head cap screw (8ea)
9. 5/16-18 x 1/2 socket head cap screw (2ea)
10. Black & Blue Dots (4ea)
11. 7/16-14 x 3 1/2 socket head cap screw
12. 7/16-14 x 2 3/4 socket head cap screw
13. 7/16-14 jam nuts (2ea)
14. 7/16 black hardened washers (4ea)
15. Hex wrenches 3/8, 1/4, 3/16, and 5/32

Studio Pro Monitor Parts List



Parts per stand: Studio Pro LMS 1

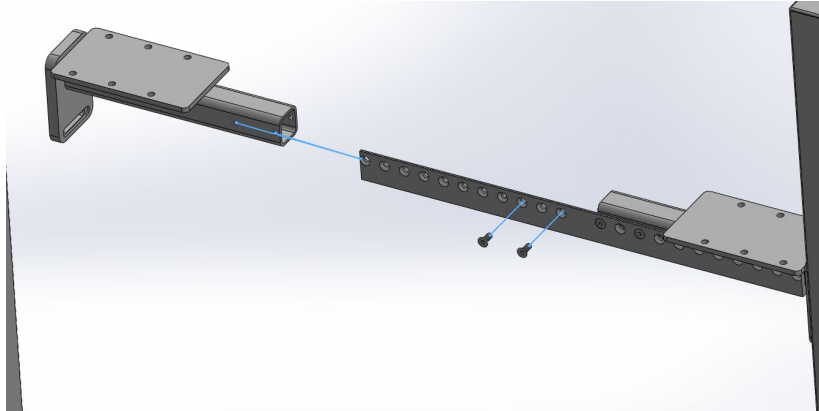
- 1) Upright - 46" or 56" height (2ea)
- 2) Upper Mount - 7.5" length (2ea)
- 3) Upper Mount Connector - 14.5" (1ea)
- 4) Foot - 22" (2ea)
- 5) Lower Mount - 7" length (2ea)
- 6) Lower Mount Connector - 11" (2ea)
- 7) Adjustable Speaker Support Bars - 12" (4ea)

Parts per stand: Studio Pro LMS 2

- 1) Upright - 46" or 56" height (2ea)
- 2) Upper Mount - 11.5" length (2ea)
- 3) Upper Mount Connector - 22.5" (1ea)
- 4) Foot - 24" (2ea)
- 5) Lower Mount - 11" length (2ea)
- 6) Lower Mount Connector - 22" (2ea)
- 7) Adjustable Speaker Support Bars - 14" (4ea)

ASSEMBLY INSTRUCTIONS

STEP #1: Upper Mount Assembly Instructions

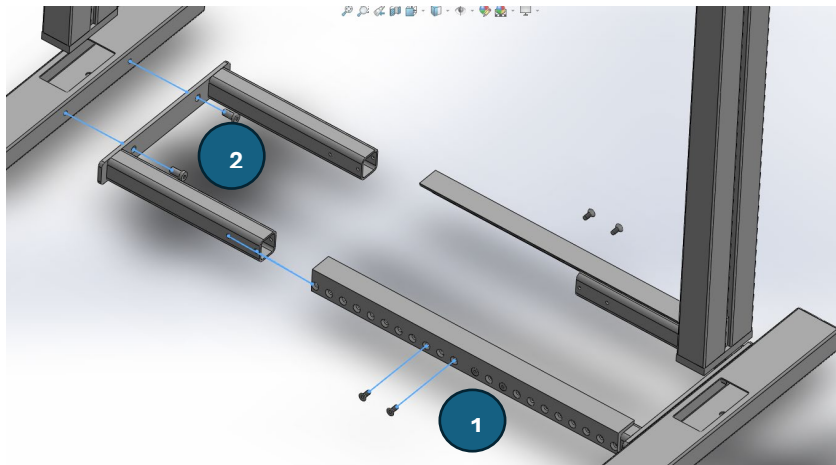


(Color is just for visibility. Stands come in black only)

The Upper Mount Assembly ships assembled to the minimum width. To adjust the width to accommodate your speaker width:

- Remove the four ¼-20 x 5/8 Flat Head Cap Screws holding the connector to the mounts
- Reposition the Upper Mounts and reconnect the Mount Connector to achieve desired overall width.
- Secure the Upper Mount Connector to the Upper Mounts with the ¼-20 x 5/8 Flat Head Cap Screws

STEP #2: Lower Mount Assembly Instructions

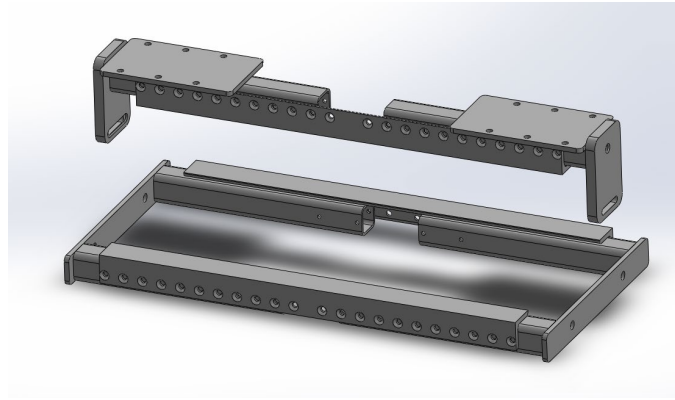


(Color is just for visibility. Our Stands come in black only)

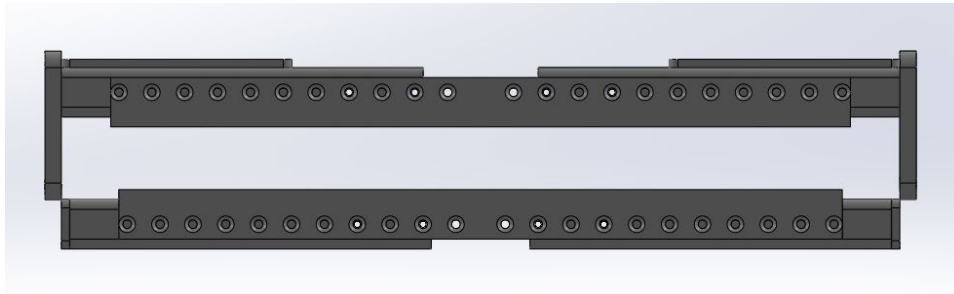
The Lower Mount Assembly ships assembled to the minimum width. To adjust the width to accommodate your speaker width:

- 1** - Remove the eight ¼-20 x 5/8 Flat Head Cap Screws holding the connectors to the mounts
- Position the Lower Mounts and reconnect to the Lower Mount Connectors to achieve desired overall width.
- Secure the Lower Mount Connectors to the lower Mounts with the ¼-20 x 5/8 Flat Head Cap Screws
- 2** - Attach the lower Mount Assembly to the feet of the stand with four 3/8-16 low head cap screws. DO NOT tighten these bolts completely. You will come back to do this later.

- **Check Steps #1 & 2:** Upper and Lower Mount Assemblies Complete

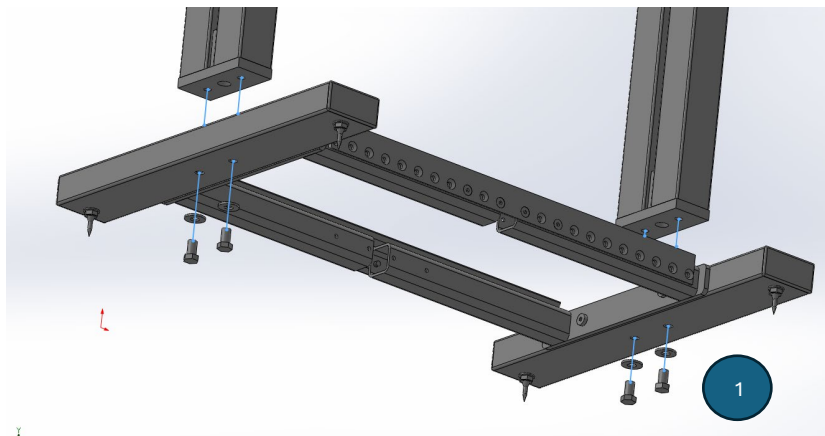


When sizing the upper and lower assemblies, make sure to use the same hole positions on the Upper and Lower Mount Connectors. When sized correctly, the upper and lower assemblies should align as shown below. There is a slight difference in size making the parts not quite fit together, but the lower assembly length measures the same as the INSIDE of the upper assembly.



NOTE: THESE STANDS ARE NOT DESIGNED FOR THE UPPER AND LOWER ASSEMBLY TO BE SET AT DIFFERING POSITIONS. THIS WILL CAUSE MIS-ALIGNMENT OF PARTS THAT CAN RESULT IN INSTABILITY AND POSSIBLE STAND FAILURE.

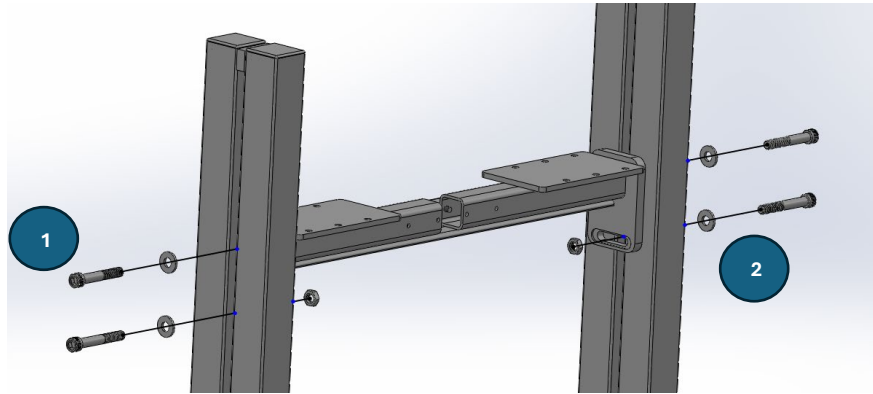
STEP #3: Upright Assembly (lower)



Connect the uprights to the lower assembly by:

- Inserting the Upright into the opening on the top of the foot. Be sure to insert the end with the threaded holes.
- Secure the Upright to the foot by using the 7/16-14 x 1 gold, hex head cap screws and 7/16 flat washers through the bottom of the foot.

STEP #4: Upright Assembly (upper)

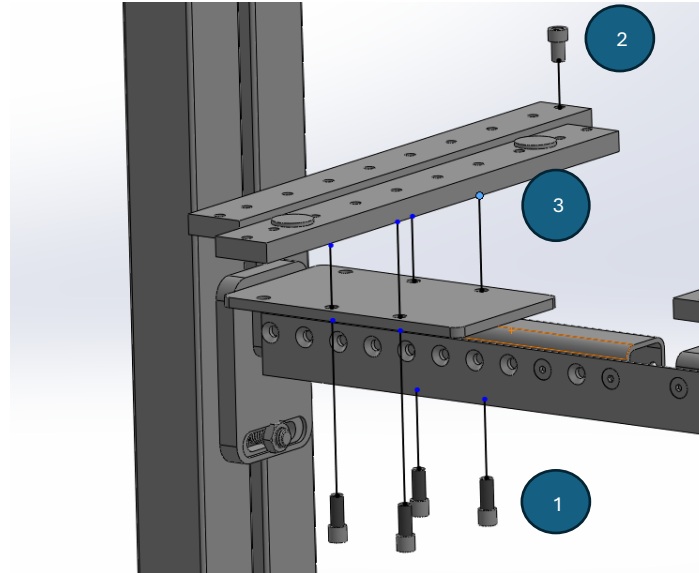


The Upper cross Piece can now be mounted to the stand.

- 1** TOP SCREW: Insert 7/16-14 x 2 $\frac{3}{4}$ Socket Head Cap Screws through the Hardened Washers and the upright slot. Secure into threaded hole in the Upper Mount.
- 2** BOTTOM SCREW: Insert 7/16-14 x 3 Socket Head Cap Screws through the Hardened Washers and the upright slot. Secure with a 7/16 jam nut.

NOTE: Now tighten the four screws attaching the Lower Mount Assembly to the feet that were left loose in STEP #2.

STEP #5: Speaker Support Bar Assembly



The Studio Pro Speaker Support Bars are designed to be adjusted to fit the depth of your speaker. Simply position the bars with equal amounts to the front and back of the cross bar. Then:

- 1** - Attach each bar to the mounting plate using two 5/6-18 x $\frac{3}{4}$ socket head cap screws.
- 2** - If tilting speaker, attach one 5/16-18 x $\frac{1}{2}$ socket head cap screw at the end of 2 speaker support bars
- 3** - Sorbothane Black & Blue Dots are provided with these stands. They are to be placed between the speaker and the stand. The blue side goes toward the stand and the black surface (urethane coating) toward the speaker.

Step #6: Final Checks and Adjustments

Level Stand Base

The base of the stand can be leveled by moving the spikes in or out of the feet. Once level the jam nuts should be tight against the feet to lock spikes in place.

Level the Upper Assembly

1. The upper assembly should be set at the desired height from the floor to top of the support bars. Check to be sure assembly is level across the width of the stand.
2. Then check the front to back leveling of each side.
3. If both sides are level, set up is complete.
4. If both sides are not level:
 - a. Loosen the screws holding the assembly to the uprights. Assistance from a second person is recommended to hold the assembly in place while repositioning the assembly.
 - b. Place a level on the speaker support bars on one side of the assembly, running front to back.
 - c. Reposition (rotate) the assembly so that the front to back position is level and retighten the screws on that side.
 - d. Check the other side with the level in the same manner. If level retighten the screws on that side and set up is complete.
 - e. If second side is not level
 - i. Loosen, but do not remove the two flat head cap screws in the upper mount connector on the side.
 - ii. Reposition (rotate) the upper mount so that it is level front to back.
 - iii. Retighten the screws holding the mount to the upright.
 - iv. Retighten the screws in the upper mount connector.
 - v. Set up is complete.

Final Check

Check to be sure all screws are tightened prior to placing monitor on the stand.